

AHL-LIGHT 50

ROBUST AND RADIATION-TOLERANT LIGHT FOR USE IN AIR AND WATER



The AHL-LIGHT 50 is a high-performance, radiation-tolerant industrial light, engineered for nuclear environments. It operates in both air and water, with an anodized aluminum housing that resists temperatures up to 50°C and pressures down to 30 meters. Key specs include a luminous flux of 55,000 lumens at 3000K or 58,000 lumens at 5000K, an IP68 rating, and over 50,000 operational hours, ensuring minimal maintenance.

APPLICATIONS

- Air and underwater use for reactor inspections and fixed light applications.
- High-temperature lighting in reactor zones.
- 24/7 surveillance in nuclear facilities.

BENEFITS

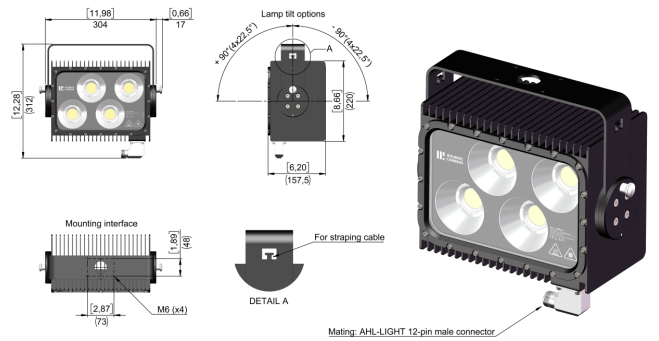
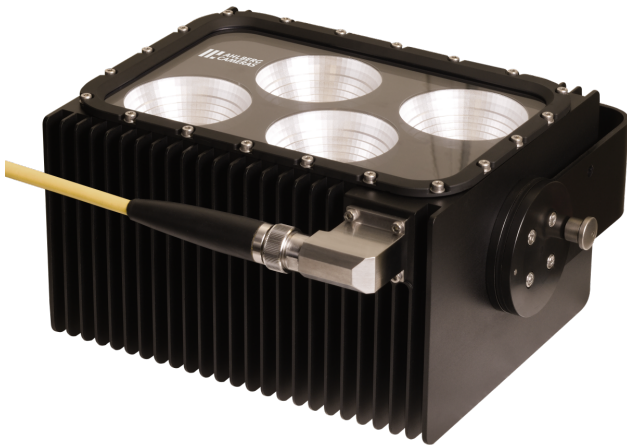
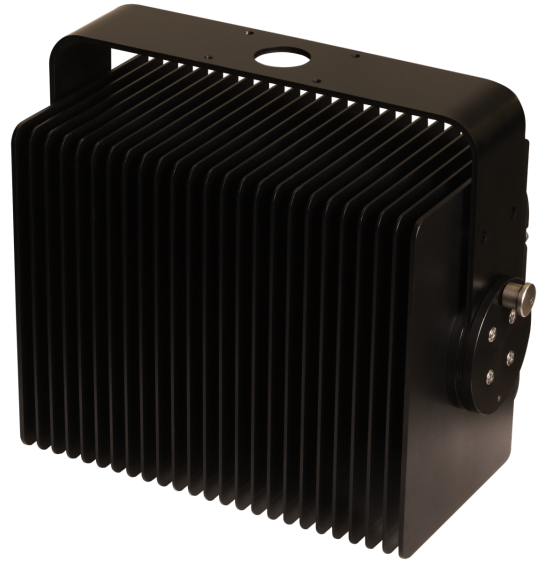
- Durable in extreme conditions.
- Reduced maintenance costs thanks to long operational lifetime of LEDs.

SPECIFICATIONS

Dimensions (HxWxD)	309 x 337 x 158 mm (12.17 x 13.27 x 6.22 inch)
Weight	9 kg (19.84 lbs)
Housing material	Anodized Aluminum (EN AW-6082 T6), Stainless steel (EN 1.4301)
Front glass material	Polycarbonate
Maximum ambient temperature	50°C (122°F) both air and water
Overheat protection	Yes
Water tightness	3 bar (30 m)
IP classification	IP68 30 m (65.62 ft) 24/7/365
Typical luminous flux	55 000lm (@ 3000K), 58 000lm (@ 5000K)
Color rendering index	CRI 80
Color temperature	3000K, 5000K
Lighting angle	64°
Life time	>50 000 h
Radiation tolerance (total dose)	50 000 Gy (5 000 000 rad)

We reserve the right to alter specifications without prior notice

AHL-LIGHT 50 IMAGES



We reserve the right to alter specifications without prior notice