



CCS200

CAMERA CONTROL SOFTWARE FOR CCU200/PIS200

The Camera Control Software 200 is an alternative for a camera hardware remote control. The software allows the user to control the CCU200/PIS200 control units from a computer.

APPLICATIONS

- CCS200 is installed on a computer
- Connected with RS422 ACP protocol to CCU200/PIS200

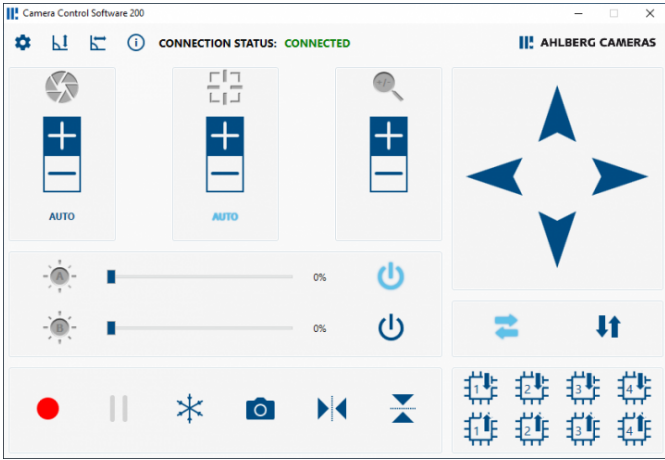
BENEFITS

- All camera functions such as pan, tilt, lights, zoom, focus and iris can be controlled
- Video recording and snapshots can also be controlled
- Possible to control the CCU/camera functions from a long distance
- Possible to control the CCU/camera through Ethernet in a network (RS422 to Ethernet converter needed)

SPECIFICATIONS

We reserve the right to alter specifications without prior notice

CCS200 IMAGES



We reserve the right to alter specifications without prior notice