



MINI-RAD SHIELDING

EXTRA SHIELDING FOR THE MINI-RAD CAMERA

The Mini-Rad Shielding can be placed outside the Mini-Rad 30 HD and Mini-Rad F30 HD cameras. The shielding doubles the radiation resistance of the camera and enables it to operate in environments where previously only tube cameras could be used.

APPLICATIONS

- To be mounted on a Mini-Rad camera which must use mirror attachment together with the shielding

BENEFITS

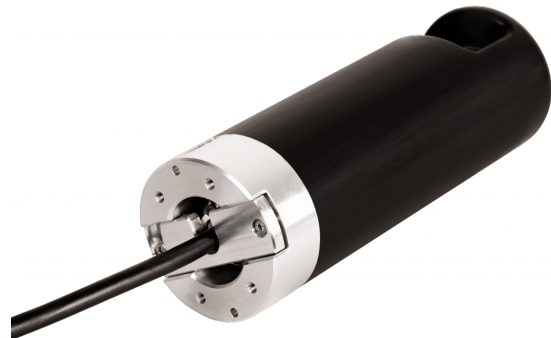
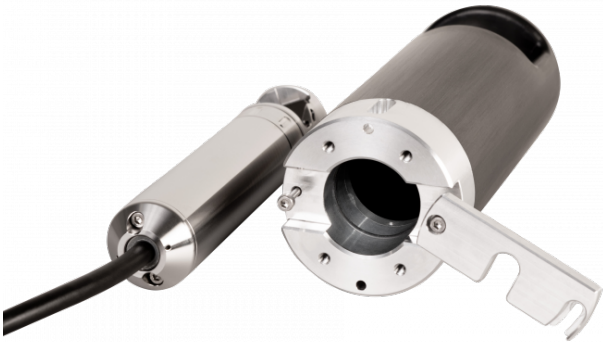
- Doubles the already high radiation tolerance of the Mini-Rad camera

SPECIFICATIONS

Diameter	59.5 mm (2.3")
Length	190 mm (7.4")
Weight	5.1 kg (11.4 lbs)
Housing material	Stainless steel, and tungsten overmolded with PUR
Radiation tolerance (dose rate)	10 000 Gy/h (1 000 000 rad/h) for Mini-Rad with this shielding
Radiation tolerance (total dose)	100 000 Gy (10 000 000 rad) for Mini-Rad with this shielding

We reserve the right to alter specifications without prior notice

MINI-RAD SHIELDING IMAGES



We reserve the right to alter specifications without prior notice