



PTZ170 HDC

FUEL INSPECTION FULL-HD CAMERA

PTZ170 HDC is developed for detailed close-up inspections with Full-HD imagery of highly irradiating fuel. It is used in 4-FACE fuel inspection systems, fresh fuel elevators, fuel preparation machines and other manipulators. The camera features pan&tilt movements as well as active internal cooling.

APPLICATIONS

- For placement in 4-face fuel inspection systems, fresh fuel elevators, fuel preparation machines or other manipulators where the camera has to meet exceptional demands due to the placement close to fuel assemblies and fuel rods.

BENEFITS

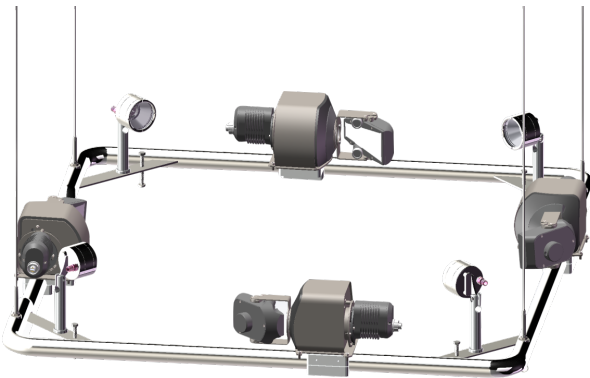
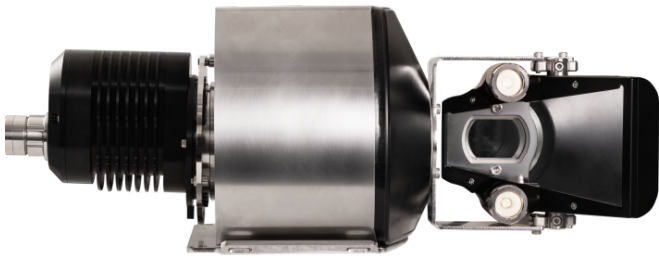
- Full-HD resolution
- Auto-focus and auto-iris
- Tilt function integrated
- Pan function integrated
- LED lights integrated

SPECIFICATIONS

Dimensions (L*W*H)	470*190*174 mm (18,50" x 7,48" x 6,85")
Housing material	Stainless steel EN 1.4301, AISI 304, anodized aluminum
Front glass material	Quartz glass (non-browning)
Weight	40 kg
Radiation tolerance (dose rate)	10 000 Gy/h (1 000 000 rad/h)
Radiation tolerance (total dose)	300 000 Gy (30 000 000 rad)
Resolution HD version	Full-HD, 1080p
Zoom	x10 optical x10 digital giving x100
HD horizontal angle of view	47° (wide end)
Maximum temperature	50°C, 70°C up to 72h
Water tightness	min 3.5 bar (50 psi)
Lights	2x built-in LED light (2x 900 lumen)
Tilt angle	-90° to +90°
Pan angle	-20° to +20°

We reserve the right to alter specifications without prior notice

PTZ170 HDC IMAGES



We reserve the right to alter specifications without prior notice